

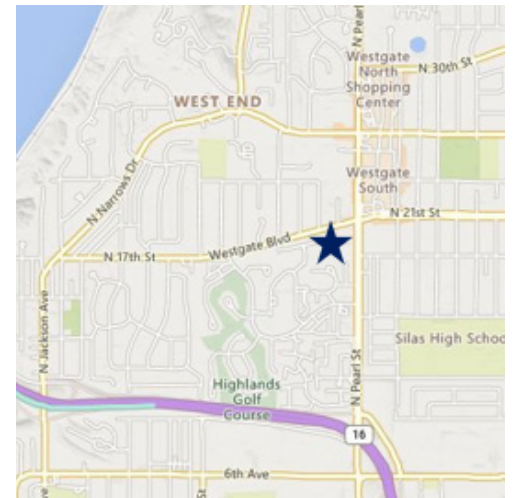


BUILDING AN  
EXCEPTIONAL  
FUTURE,  
TOGETHER.

# FOR LEASE

## PEARL PLACE II

6004 N. WESTGATE BLVD., TACOMA



### FEATURES

- Class A Office Building
- Minutes from I-5 and HWY 16
- Opportunity for Exterior Building and Monument Signage
- Beautiful Finishes and Landscaping
- Professionally Managed by Rush Properties

### CURRENT AVAILABILITY

SUITE	SIZE	AVAILABLE
150	2,360	Now
220	3,874	Now

### CONTACT

**Emily Frankland**

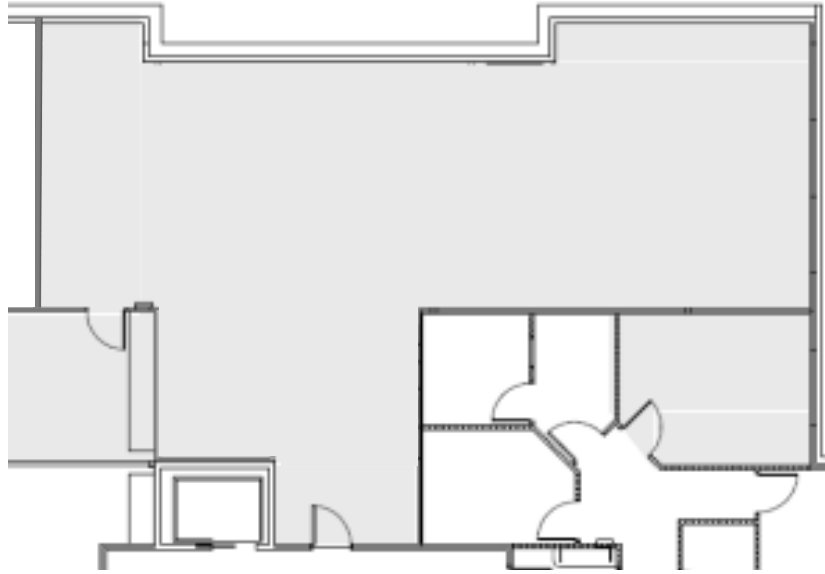
Leasing Broker

t 253.858.3636

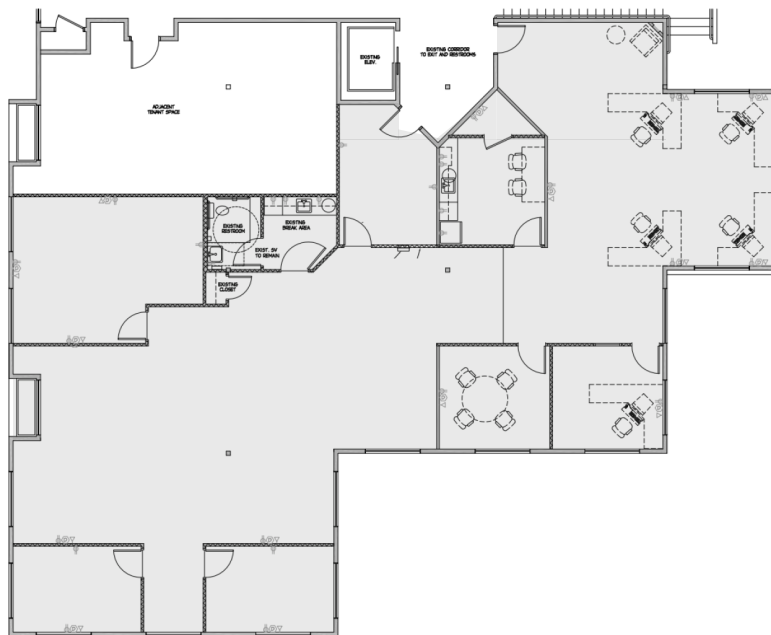
[efrankland@therushcompanies.com](mailto:efrankland@therushcompanies.com)

## PEARL PLACE II

6004 N. WESTGATE BLVD., TACOMA



Suite 150 - 2,360 Rentable Square Feet



Suite 220 - 3,874 Rentable Square Feet