

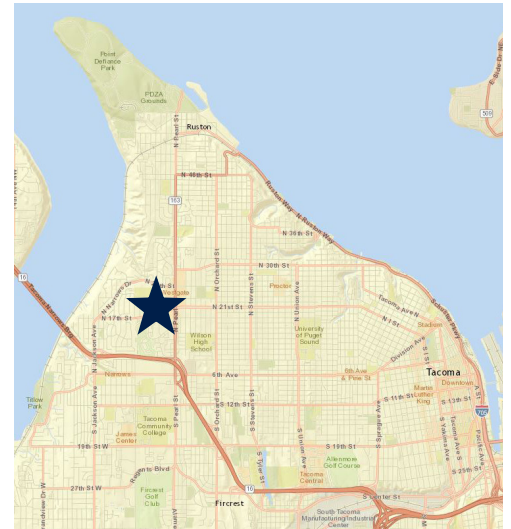


BUILDING AN
EXCEPTIONAL
FUTURE,
TOGETHER.

FOR LEASE

PEARL PLACE

6002 N WESTGATE BLVD., TACOMA



FEATURES

- Class A Office Building
- Abundant Parking Available
- Excellent Access to N 21st St and N Pearl St
- Minutes from I-5 and HWY 16
- Beautiful Finishes and Landscaping
- Professionally Managed by Rush Properties

CURRENT AVAILABILITY

SUITE	SIZE	AVAILABLE
260	321	Q4 2022

CONTACT

Karen Fairall, CCIM

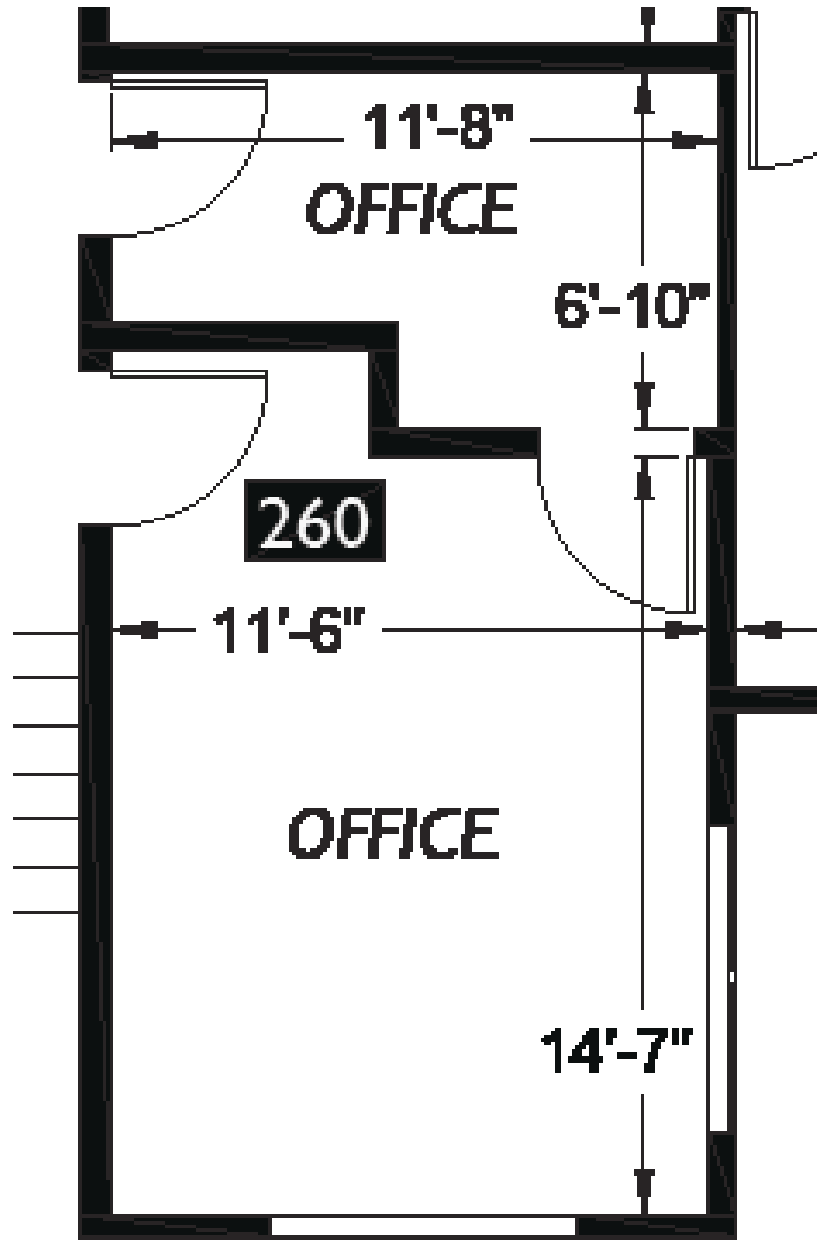
Director of Brokerage Services
t 253.858.3636

kfairall@therushcompanies.com

Kayla Dyer

Associate Broker
t 253.858.3636

kdyer@therushcompanies.com



Suite 260 - 321 Rentable Square Feet