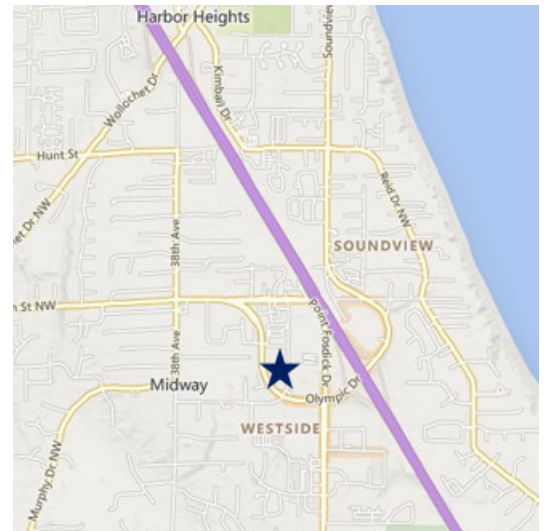




BUILDING AN
EXCEPTIONAL
FUTURE,
TOGETHER.

FOR LEASE

OLYMPIC DRIVE PROFESSIONAL CENTER 5201 OLYMPIC DRIVE, GIG HARBOR



FEATURES

- Excellent Visibility from Olympic Drive
- Attractive Finishes and Landscaping
- Desirable Olympic Square Location
- Conveniently located off HWY 16
- Professionally Managed by Rush Properties

CURRENT AVAILABILITY

SUITE	SIZE	AVAILABLE
150	1,064	Now

CONTACT

Emily Frankland

Leasing Broker

t 253.858.3636

efrankland@therushcompanies.com

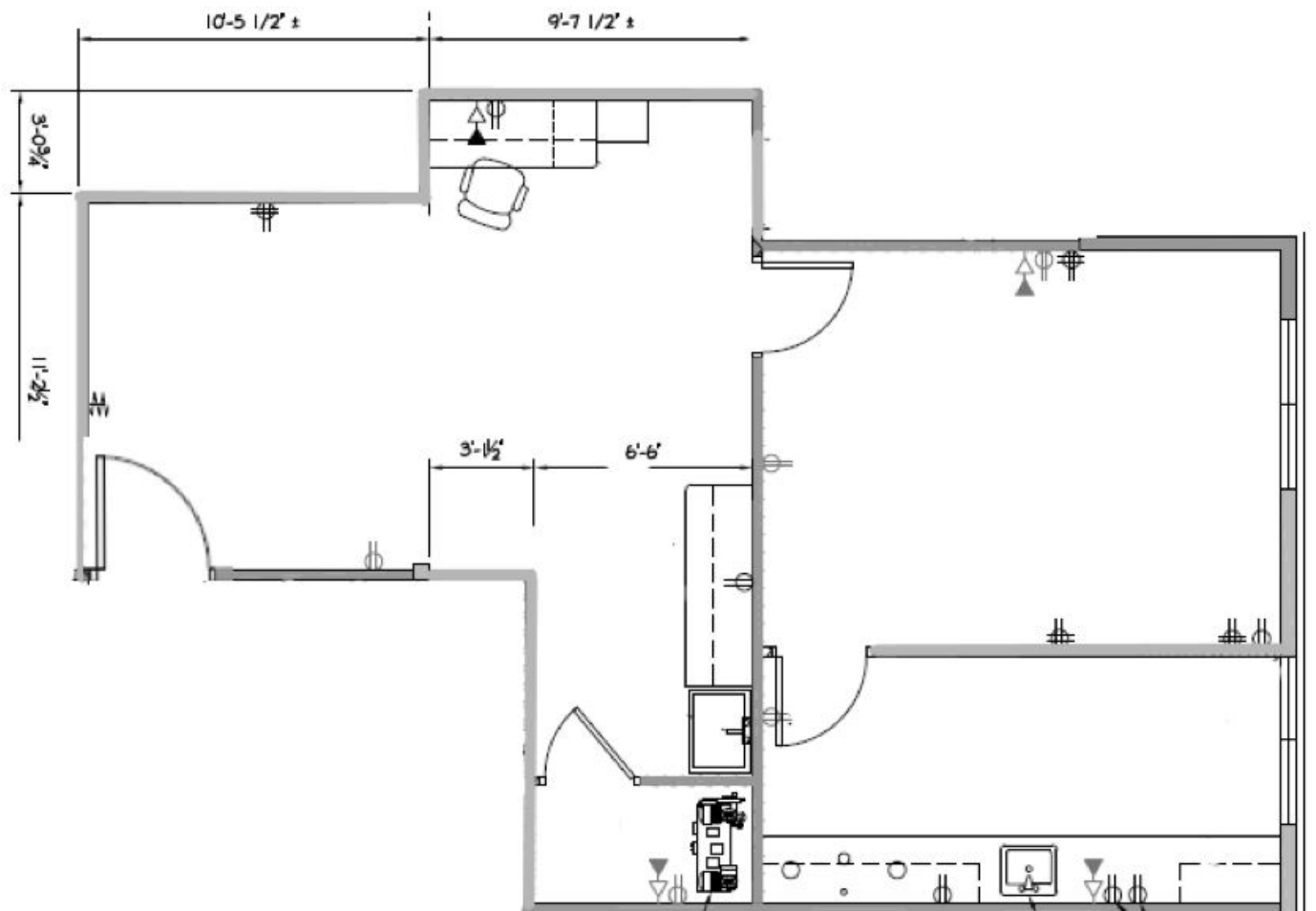
Kayla Dyer

Associate Broker

t 253.858.3636

kdyer@therushcompanies.com

OLYMPIC DRIVE PROFESSIONAL CENTER 5201 OLYMPIC DRIVE, GIG HARBOR



Suite 150 - 904 Rentable Square Feet