

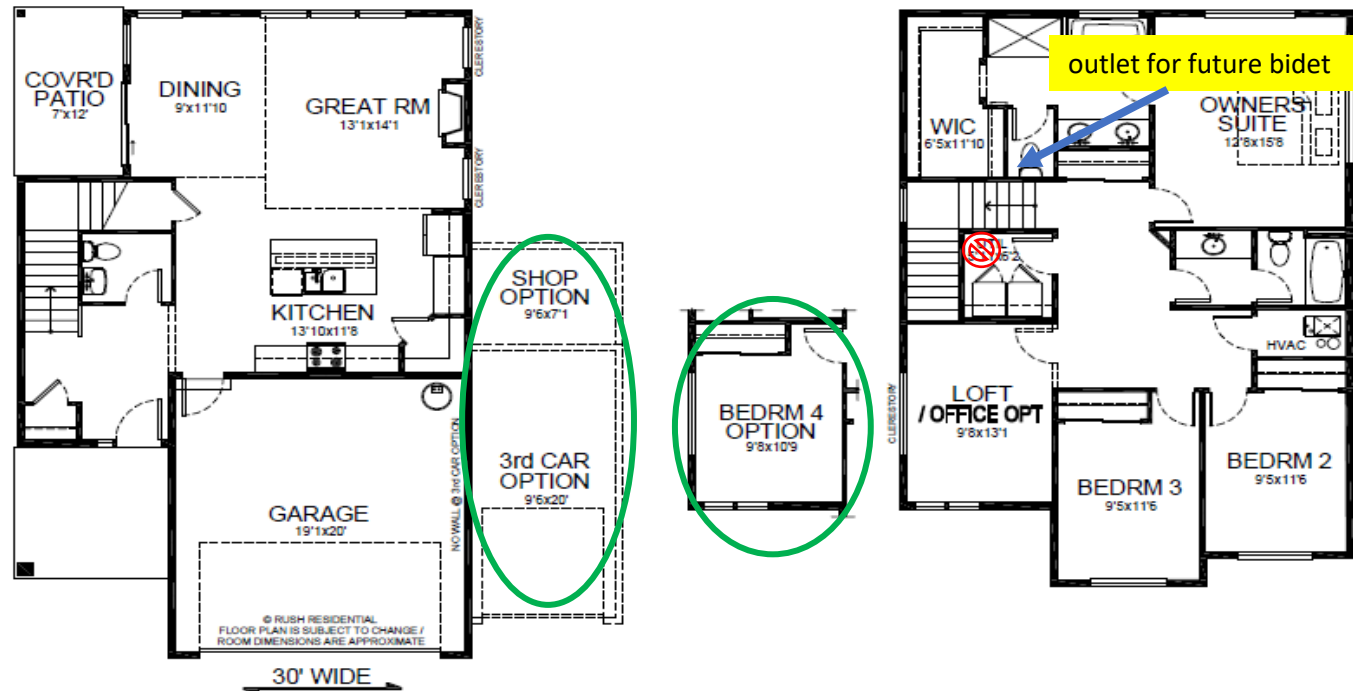
The Mercer

1,916 sf
8/17/22

Lot 5 - 3 car /Bed 4 Option

MEADOWS

AT MILL POND



Building Exceptional Homes.
www.RushResidential.com

Reported square footage and floor plans are approximate. Base price does not include options. Plans shown are a general representation of, and may vary from actual constructed floor plan. Standards vary depending on neighborhood. For more information, contact your Rush Residential sales representative. Rush Residential reserves the right to change the floor plan at any time.

Lot 5 - 2



ELEVATION "A" TRIM 2

FINAL EXTERIOR DESIGN TO BE CONFIRMED WITH LORENE